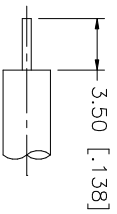
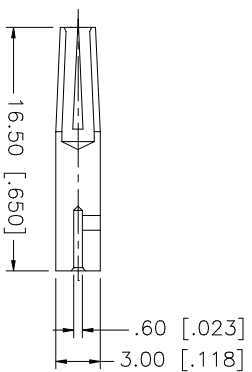
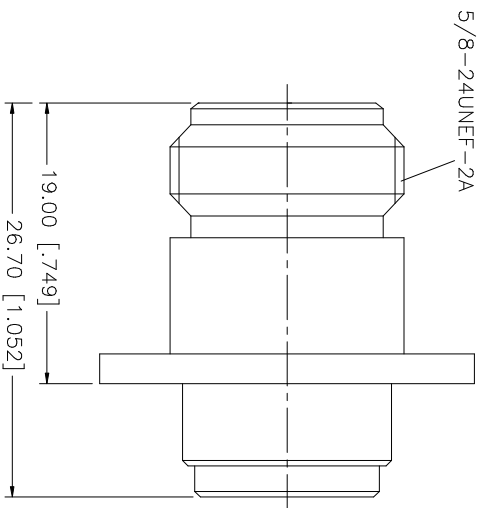
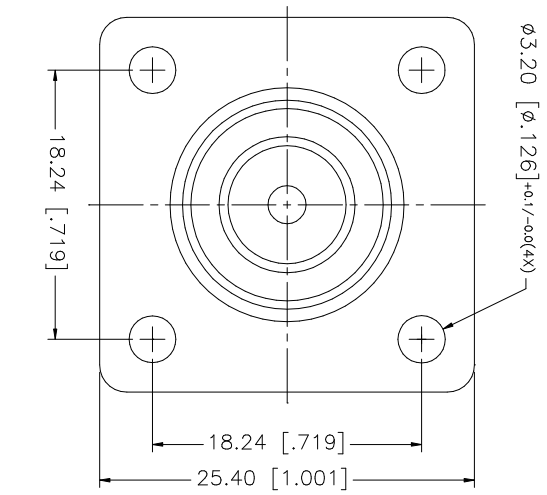
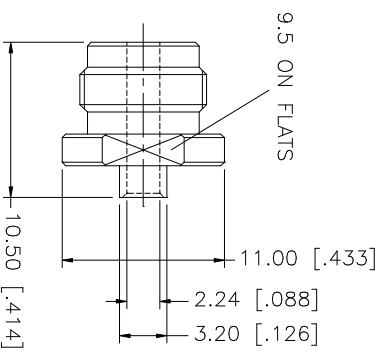
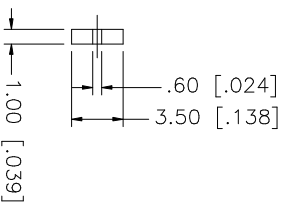


REV.	DATE
A	01/30/04

DESCRIPTION
UPDATE DRAWING FORMAT



RECOMMENDED CABLE STRIPPING DIM'S



8																			
7																			
6																			
5	SOLDER NUT	BRASS	NEXCOTE	1															
4	INSULATOR	TEFLON	NATURAL	1															
3	CONTACT PIN	PHOS. BRONZE	GOLD	1															
2	INSULATOR	TEFLON	NATURAL	1															
1	BODY	BRASS	NEXCOTE	1															
	DESCRIPTION	MATERIAL	FINISH	QTY															
					UNLESS OTHERWISE SPECIFIED DIMENSIONS ARE IN MILLIMETERS. DIMENSIONS IN () ARE IN INCHES AND FOR CUSTOMER REFERENCE ONLY. UNLESS OTHERWISE SPECIFIED, TOLERANCES FOR MILLIMETERS ARE: 0.5 - 8mm ± 0.20mm 8 - 30mm ± 0.40mm 30 - 120mm ± 0.50mm UNLESS OTHERWISE SPECIFIED, TOLERANCES FOR INCHES ARE: .020 - .315 = ± 0.007" .315 - 1.180 = ± 0.015" 1.180 - 4.724 = ± 0.020"					DO NOT SCALE DRAWING					APPROVALS DRAWN G.R.S. DATE 01/30/04 CHECKED ISSUED SHEET 1 OF 1				
					CAD FILE C:/172/172169.DWG					DWG. NO. 172169.DWG REV. A SIZE A SCALE NA									
N PANEL DIRECT SOLDER JACK (FOR .085", .086" CABLE)																			
PART NO. 172169																			